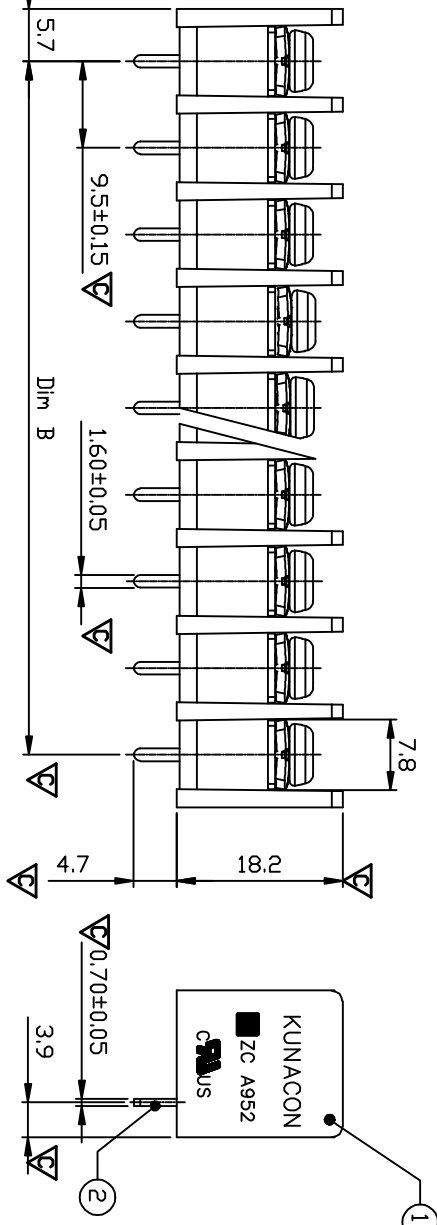
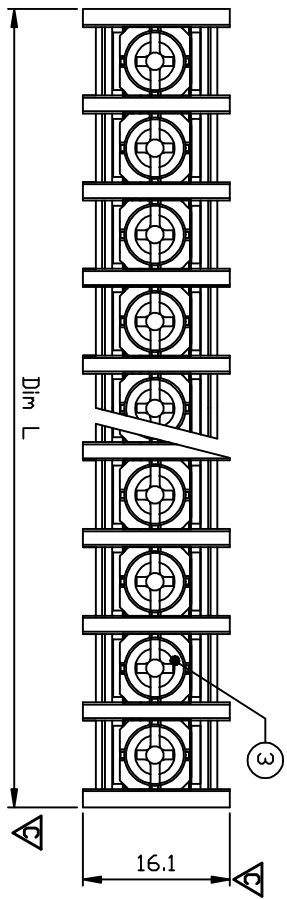


REV	ECN NO	DESCRIPTION	DATE	NAME
A		NEW		

Technical data

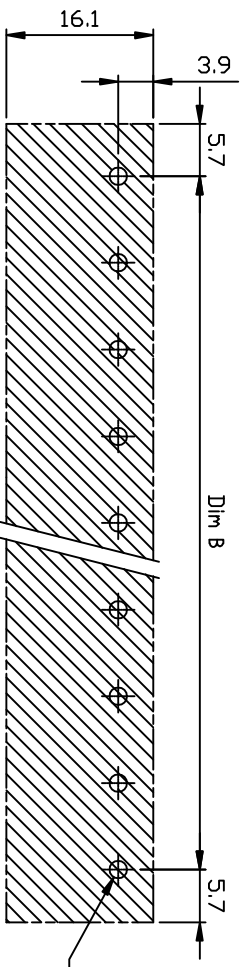
- Nominal voltage: 300V/30A  
PITCH:9.5mm
- Connection capacity:  
AWG 22-10
- Insulation Withstands Voltage:  
AC 2500V/MIN
- Insulation Resistance:  
1000MΩ or more at DC500V
- Tightening torque:  
10.0kgf.cm (1.0N.m)
- Screw thread: M3.5  
Screw type: Captive screw
- Using temperature range:-40°C ~ 105°C  
Soldering temperature:250±10°C /5s
- Undimentioned Tolerances:



Dim.L=(P-1)x9.5+11.4	Dim L	+0.10
Dim.B=(P-1)x9.5	Dim L	±0.30
P= number of poles	Dim L	±0.40
	Dim L	±0.50
	Dim L	±0.60
0-30mm	Dim B	±0.15
over 30mm-60mm	Dim B	±0.25
over 60mm-90mm	Dim B	±0.30
over 90mm-180mm	Dim B	±0.40
over 180mm	Dim B	±0.50

HB-9500  
300V  
30A

KUNACON  
ZC A952  
CPLUS



PCB LAYOUT

Ordering Information  
L492XX -X XX X

- Pin数 PIN數
- 0、180° 1、Au1.8u" 2、Au1.5u" 9、接線式
  - 1、90° 1、Au1.8u" 2、Au1.5u" 7、半金鍍
  - 2、SMT 8、鍍液鍍
  - 8、鍍液鍍 9、鍍液鍍

- 流水号 流水号
- A線裝
  - B管裝
  - C蓋裝
  - D線裝

- Safety approval: RoHS
- RoHS Compliance
- Critical dimension:  $\nabla$
- PLATING:80u" MIN TIN PLATING NICKEL PLATED WITH 30-60u"

**东莞连大精密制品有限公司**  
Dongguan Lianda Precision Products Co., LTD

ITEM NAME OF PART	MATERIAL	NOTES
3 SCREW+WASHER	STEEL	M3.5*0.6, NI Plated
2 CONTACT	BRASS	M3.5*0.6, Tin PLATED
1 BODY	PA66 UL94V-0	Black

TITLE	PART NO	DRAWING NO	SCALE	UNIT	PAGE	SIZE
9.5端子台-X 1X2P 180° 每座 PCL 7	L49202-08XXA		1:1	mm	1/1	A4

TOLERANCE UNLESS OTHERWISE SPECIFIED	OTHERWISE SPECIFIED	ANGLES
±0.30	±3°	
±0.20	±2°	
±0.10	±1°	

DRAWN BY	CHECKED BY	APPROVED BY
Lu Junhui		